

## ACCESS TO THE RECYCLING CENTER

Access to the Recycling Center is limited to residential customers who participate in the curbside trash and recycling program.



A valid annual vehicle sticker is required for entry. Stickers are distributed in January and are good for 12 months.

Only customers who have paid their annual fee in full are eligible for a Recycling Center sticker.

Residents who live in larger apartment or condominium complexes are entitled to purchase a monthly recycling pass for \$2.00 per month which allows them to bring cardboard, paper and commingle plastics to the Recycling Center.

Homeowners who have paid their annual fee in full may apply for a sticker by sending a copy of their current vehicle registration and a stamped self-addressed envelope to the Solid Waste Department, 43 South Washington Street, North Attleboro, MA 02760.



## SPECIAL EVENTS

### HAZARDOUS HOUSEHOLD WASTE

Free participation at two annual hazardous waste collection days held the last Saturday in April and September at the DPW Highway Dept. lot, 240 Smith Street. To be eligible you must have a current valid Recycling Center sticker. For a list of acceptable and unacceptable items, please see our webpage at [north-attleboro.ma.us/recycling](http://north-attleboro.ma.us/recycling).

### BULKY METAL PICKUP

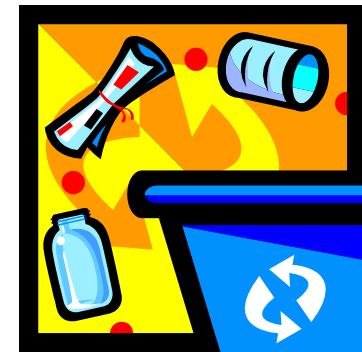
The town provides free curbside collection of bulky metal items three times per year — the last full week in March, June and September. Participants need to contact the hot line at 508-699-0151 beginning the 1st of the month to be put on the list. The deadline to register for collection is noontime on Thursday the week before the scheduled pickup. To see a complete list of acceptable/unacceptable items please see our website at [north-attleboro.ma.us/recycling](http://north-attleboro.ma.us/recycling).

**TOWN OF NORTH ATTLEBOROUGH  
SOLID WASTE DEPARTMENT**



**NORTH ATTLEBOROUGH  
SOLID WASTE DEPARTMENT**

## USING THE RECYCLING CENTER



## RECYCLING CENTER

**777 MT HOPE STREET  
FRIDAY, SATURDAY & MONDAY  
8 A.M. TO 2:30 P.M.**

# Recycling Center Overview

The Recycling Center located at 777 Mt Hope Street is a drop off transfer station where participants can bring recyclables and bulky trash items for disposal.



The Center provides compactors and containers for cardboard, commingled plastics and glass recycling, metal, wood and miscellaneous household items.

Additionally, the Center provides participants with access to various recycling vendors who take hard to dispose of items such as electronics, mattresses & box springs, books, clothing & shoes, tires, propane tanks, mercury bearing items including fluorescent light bulbs and freon-bearing appliances.

# Hours of Operation

**OPEN:** Mondays, Fridays and Saturdays  
8:00 a.m. to 2:30 p.m.  
Closed on Monday holidays.

(The Center follows the same holiday schedule as Town Hall.)

# What We Take



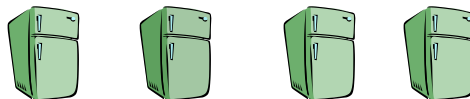
## FOR FREE

- ◆ Regular household trash in Town bags or bags with Tags.
- ◆ Cardboard, newspapers, magazines and mixed paper.
- ◆ Comingled mixed recycling (plastics, glass and aluminum cans.)
- ◆ Books, DVDs, VHS tapes, LPs, CDs.
- ◆ Shoes and clothing.



## FOR \$.15 PER POUND

- ◆ Household trash not in Town bags.
- ◆ Furniture, recliners, rocking chairs, convertible couches.
- ◆ Wood, minimal demolition and construction, wooden furniture, fencing. (no pressure treated wood).
- ◆ Metal items, cabinets, shelving, hot water heaters.
- ◆ Tools, toys, carpets, bulky household trash.



## SEPARATELY PRICED

- ◆ Freon-bearing appliances (air conditioners, refrigerators) \$ 15.00
- ◆ Appliances & white goods \$ 15.00
- ◆ Propane tanks (1 lbs) \$ 3.00
- ◆ Propane tanks (20 lbs) \$ 15.00
- ◆ Propane tanks (over 20 lbs) \$ 20.00
- ◆ eWaste (dvd players, etc.) \$ 10.00
- ◆ TV's, computers < 30" \$ 15.00
- ◆ TV's over 30" \$ 40.00
- ◆ Car tires (with or w/out rims) \$ 3.00
- ◆ Light Truck tires \$ 10.00
- ◆ Truck tires—20"+ \$ 20.00
- ◆ Mattresses \$ 15.00
- ◆ Box springs \$ 15.00

## WE DON'T TAKE

- ⊗ Asphalt, brick and concrete
- ⊗ Auto parts
- ⊗ Asphalt shingles
- ⊗ Car batteries
- ⊗ Explosive, flammable, radioactive or toxic wastes
- ⊗ Hazardous wastes
- ⊗ Paint
- ⊗ Pressure treated wood
- ⊗ Clean gypsum wallboard

FOR MORE INFORMATION ON THE TRASH AND RECYCLING PROGRAM, PLEASE SEE OUR WEBSITE AT [north-attleboro.ma.us/recycling\\_OR](http://north-attleboro.ma.us/recycling_OR) CALL THE OFFICE AT 508-699-0105.